

Milestone Park Concept

This park has wonderful characteristics. It is embedded within the neighborhood and it has a wide variety of habitat and spaces such as the open field, Big Bear Creek, and an open wooded area.

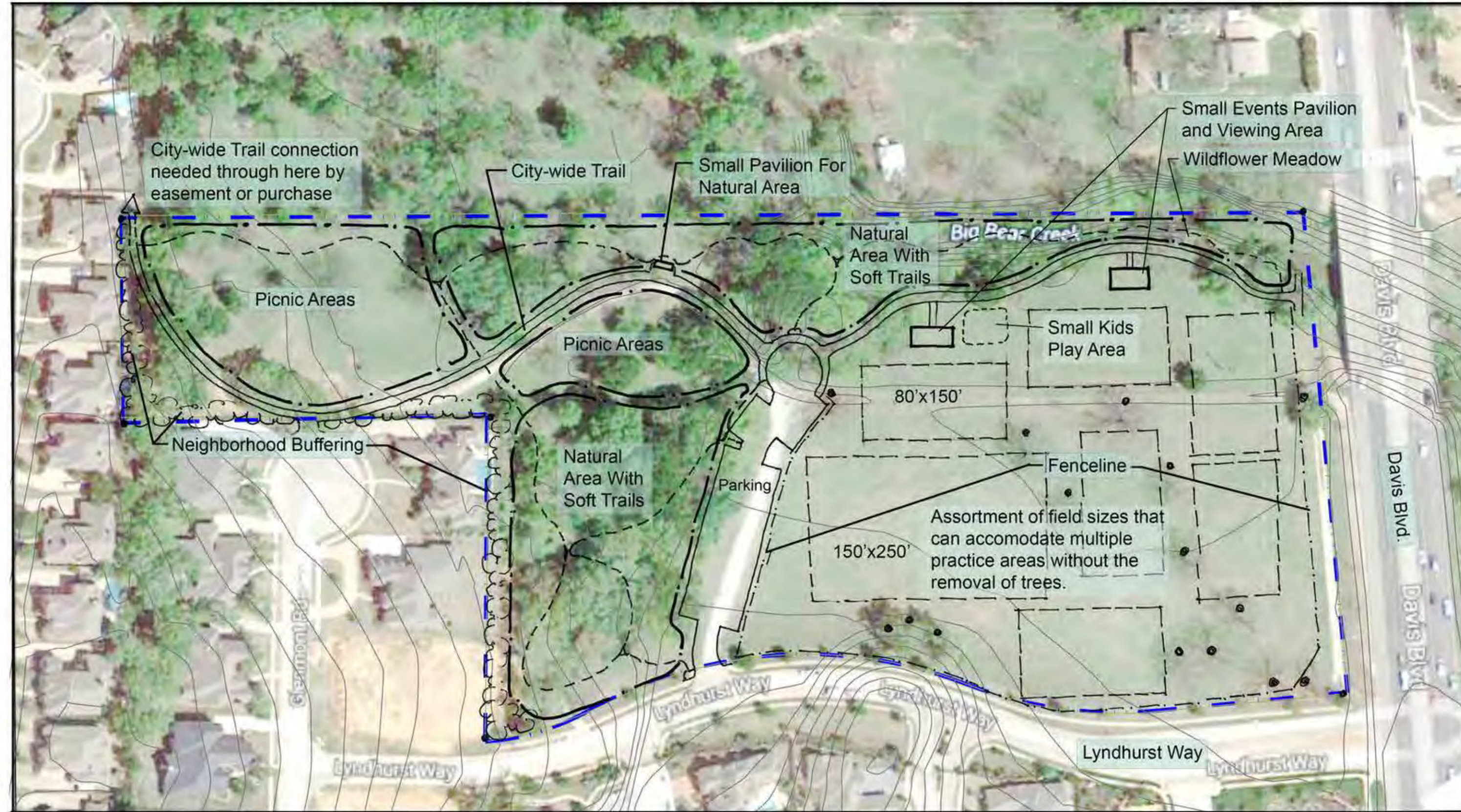
This park can function in isolation as a neighborhood park ever since the City acquired it. However, the strength of this park's location lies within the potential of connecting it with the City-wide trail system. There are not additional public trails moving east; but the potential for a future underpass at Davis Boulevard and Big Bear Creek should be studied to connect to adjoining city trails in Southlake. Milestone Park can become a major trailhead for city-wide trail enthusiasts. This would be an important characteristic to accomplish. To make this happen, the City needs to continue to negotiate an easement or purchase of the necessary areas to complete the connection.

The main sections of this park are the large open space currently used by neighbors playing with their dogs, the open wooded area that is very attractive for walking and leisurely passing time, and the more densely wooded areas including Big Bear Creek.

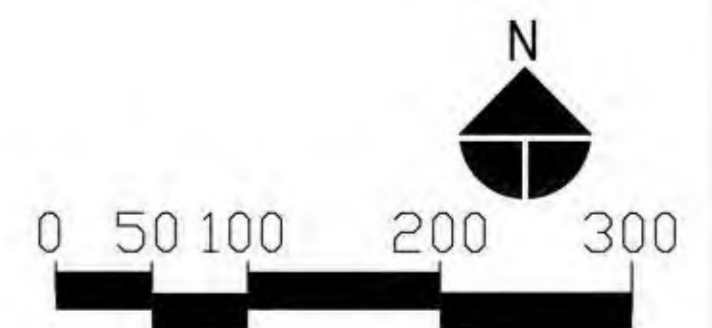
The open woods in the western half are seen as a space for gatherings and picnics, potentially having some grills but with the minimal possible addition of elements so not to disrupt the tranquility of the space. Areas for congregation would be tucked away out of the main view through the center of the park. The creek corridor would be subtly enhanced by carving out simple soft trails for bird and nature viewing, and allowing visitors to come up to the creek edges in key locations. A small simple pavilion may be added as the nature trail starting point. Inside the pavilion would be benches and some signage to talk about urban creeks and natural areas as well as the various species potentially encountered on the site.

Nestled on the north edge of the large open space is a small events pavilion that would be a multi-purpose space for gatherings and wildlife viewing without extensive walking through the woods. It is closely associated with the parking area so that ADA compliance could be met. The entire northern edge of the open space may be converted into a wildflower meadow to enhance the wildlife experience by developing a forest edge and create a butterfly garden.

Passing through the site is the eastern most section of the city-wide trail system. This would run from the most highly probable connection point on the west end and terminate on Davis Blvd near where the road crosses the creek. This trail would be the standard trail section and materials.



Around the City there is a large need for more areas for kids to practice soccer. The open space on the eastern portion of the park can serve that purpose during the times of the year when soccer leagues are active. There would not be permanent markings for fields and the field sizes shown here are such that no trees would have to be removed. The remainder of the time and times in between team events, neighbors can continue to utilize the field for open play with dogs. For safety purposes, a rural styled fence should be considered along the Davis Blvd., Lyndhurst Way, and the parking area so that soccer balls stay out of the streets. Signifying that this is in fact a city park, the corner of Davis Blvd. and Lyndhurst Way could have a small engraved stone sign designating this park as Milestone Park.

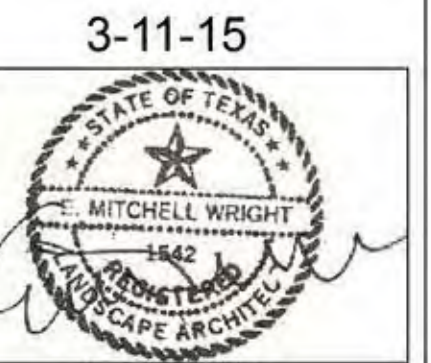


Milestone Park



Vista Planning & Design
 Landscape Architecture
 Site Planning
 Master Planning
 E. Mitchell Wright ASLA, AICP, LEED AP
 19 Sugar Shack Dr.
 West Lake Hills, Texas 78746
 (512) 673-8274
 vistaplanning@sbcglobal.net

The City of Keller, Texas
 Conceptual Park Plans Prepared as a component to the
 Keller Parks, Recreation and Open Space
 Master Plan Update



3-11-15
 sheet number
 exh