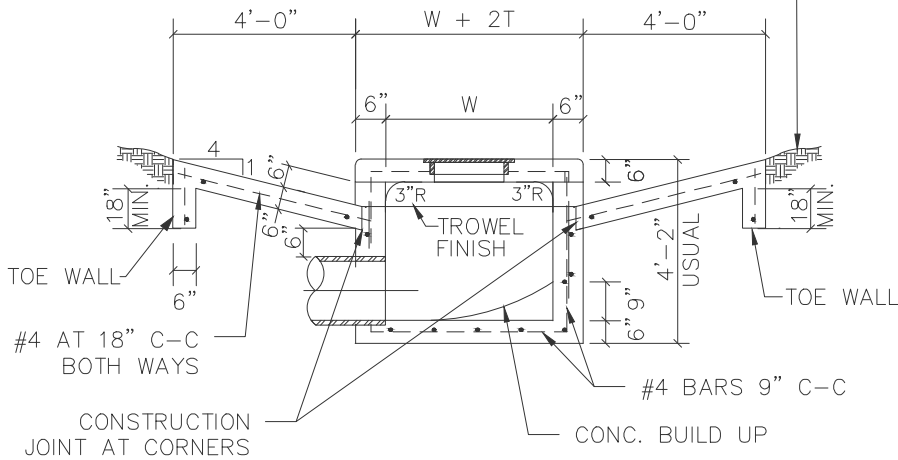


SOLID SOD MIN. 2' ON ALL SIDES
OR 8" GROUTED ROCK RIPRAP
AS REQUIRED BY ENGINEER

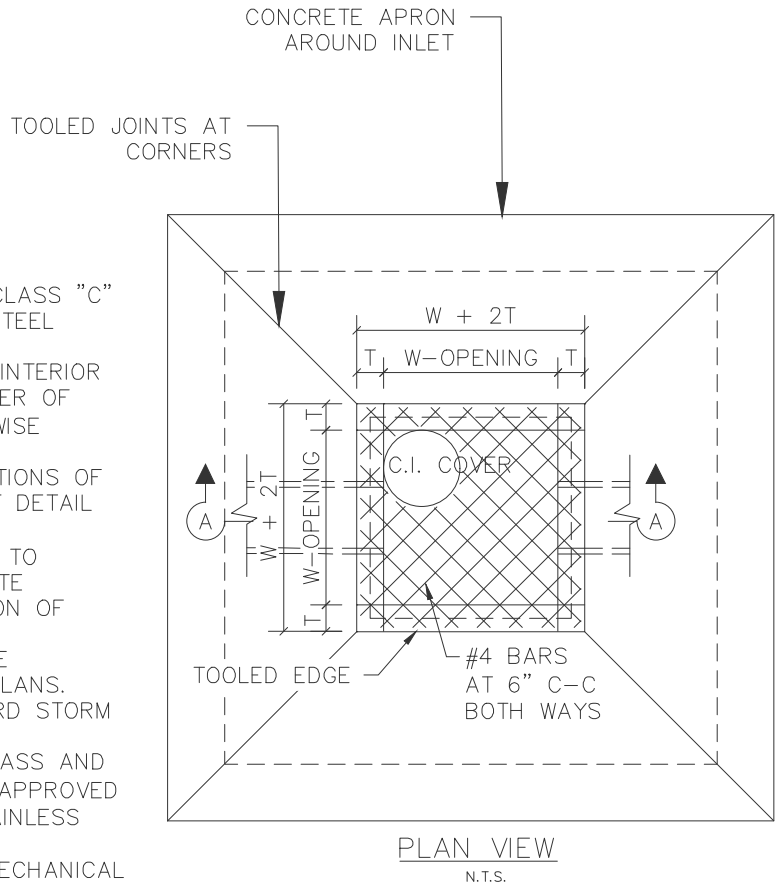


INLET SIZE	T	W
2' SQUARE	7"	2'-0"
4' SQUARE	7"	4'-0"
5' SQUARE	8"	5'-0"
6' SQUARE	9"	6'-0"
7' SQUARE	9"	7'-0"
8' SQUARE	9"	8'-0"

FOR LOWER PORTION OF 2' SQUARE
DROP INLET, USE REINF. STEEL
DETAILS OF 4' STORM DRAIN VAULT.

NOTE: TOE WALLS TO
BE 18" IN DEPTH AND
6" IN WIDTH WITH
REINFORCING BARS.

SECTION A-A
N.T.S.



NOTES:

1. MATERIAL AND WORKMANSHIP SHALL BE IN ACCORDANCE WITH NCTCOG ITEM 702.9 FOR CLASS "C" 3600 PSI CONCRETE AND ITEM 303.2.9 FOR STEEL REINFORCEMENT, GRADE 60.
2. LAYERS OF REINFORCED STEEL NEAREST THE INTERIOR AND EXTERIOR SURFACES SHALL HAVE A COVER OF 2" TO THE CENTER OF BARS, UNLESS OTHERWISE NOTED.
3. FOR DETAILS OF REINFORCING TO LOWER PORTIONS OF INLET, SEE APPROPRIATE STORM DRAIN VAULT DETAIL (D-14).
4. DEPTH OF DROP INLET FROM FINISHED GRADE TO FLOW LINE OF INLET IS VARIABLE. APPROXIMATE DEPTH WILL BE SHOWN ON PLANS AT LOCATION OF INLET.
5. ALL STANDARD DROP INLETS SHALL HAVE ONE OPENING ON EACH SIDE UNLESS SHOWN ON PLANS.
6. DECK MAY BE REINFORCED SAME AS STANDARD STORM DRAIN VAULT.
7. CAST IRON FRAME AND COVER WITH CHAIN. BASS AND HAYS PATTERN NO. 103 (NON-LOCKING), OR APPROVED EQUAL. CHAIN SHALL BE 24" LONG, 3/8" STAINLESS STEEL WITH NO SWIVELS.
8. ALL BACKFILLING SHALL BE PERFORMED BY MECHANICAL TAMPING TO 95% STANDARD PROCTOR DENSITY.
9. PROVIDE LIGHT BROOM FINISH ON ALL SURFACES.



STORM DRAIN CONSTRUCTION DETAILS
DROP INLET

REVISION DATE:
2/1/2024

SHEET: D-12